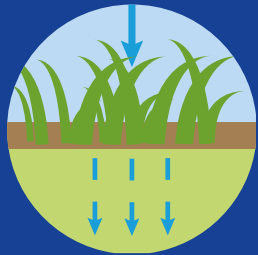


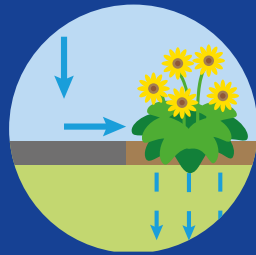
# How can you and your community get involved?

While we deliver these projects, our partners and customers can also take action to 'slow the flow'.

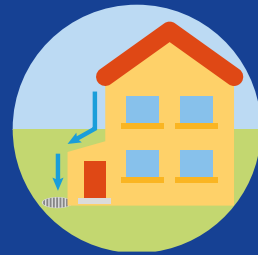
Seven ways customers can 'slow the flow'.



**Permeable is the word**  
Plant grass instead of paving over paths, install flower beds and permeable slabs.



**Need to park off road?**  
Make sure your driveway runs off into a flower bed or patch of grass rather than a drain.



**Building an extension?**  
Check that the water coming off the roof doesn't connect directly to the sewer.



**Collect rainwater or slow it down**  
Install slow-drain water butts or planters.



**Speak up about green spaces.**  
Talk to your local community leaders and groups about local greening projects and sustainable drainage solutions in parks i.e. reduce non-permeable, concrete areas.

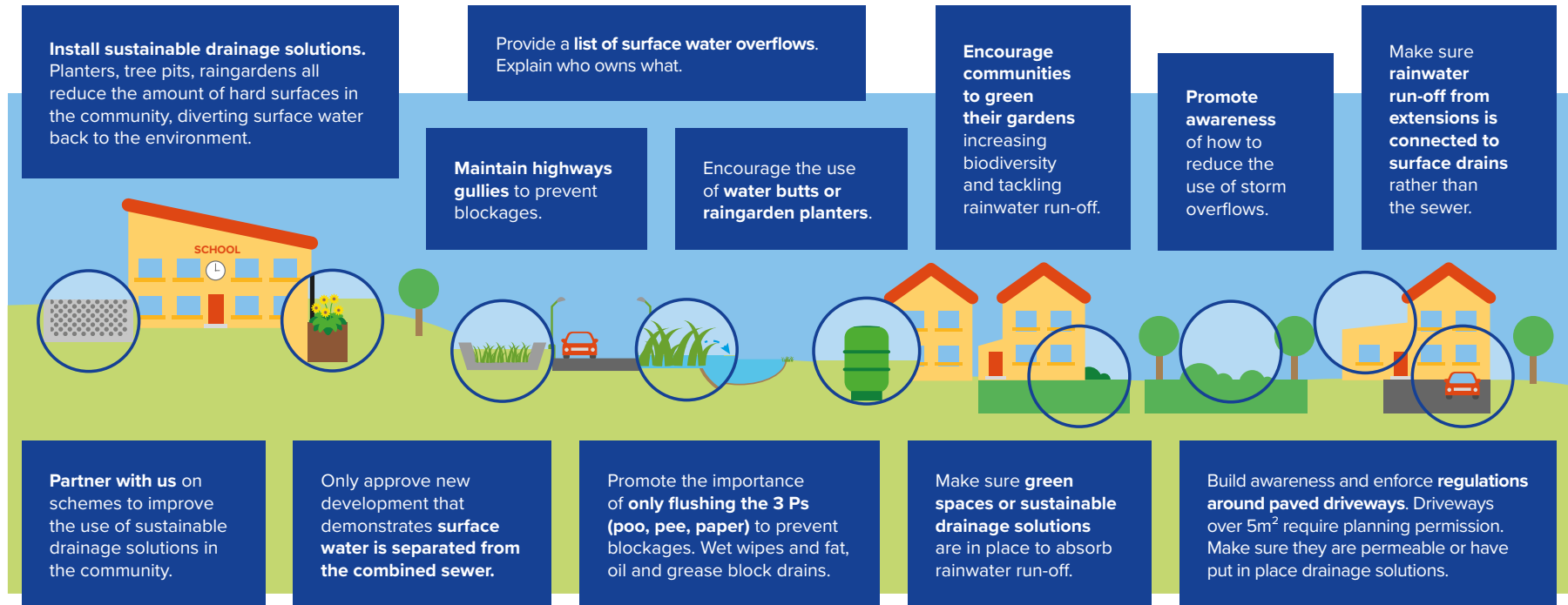


**Only flush the 3 Ps (Pee, Poo, Paper)**  
Wet wipes, nappies, sanitary or other unflushables go in the bin. Collect fats, oils and greases rather than pouring them down the drain.



**Spot a pollution?**  
Contact us about suspected pollutions so we can act right away.

# How local authorities can help slow the flow



## Tips for local businesses

- Do you have a large surface area on your land such as car park, large roof, playground? Check if your surface water runs into the sewer.
- Install raingarden planters or disconnect the surface water on site through sustainable drainage measures.
- Learn more about what we are doing and how we could work together – email us at [partnerships.overflows@southernwater.co.uk](mailto:partnerships.overflows@southernwater.co.uk).

To track our progress and find out more about storm overflows, the Clean Rivers and Seas Task Force and what we're doing to reduce storm releases, please visit our **storm overflow** pages.

